



The Illinois Prairie Path **NEWSLETTER**

Winter / Spring 2004

Annual Earth Day Trail Cleanup Set for Saturday, April 24th

The Illinois Prairie Path not-for-profit corporation will celebrate Earth Day in our traditional manner this spring by again asking volunteers to assist in cleaning away debris along all 61 miles of the Path and the 11½ miles of the Great Western Trail.

How do I participate?

You can call one of our cleanup coordinators (see list page 3) to ask where your help is needed most, or just bring a garbage bag and join in with the cleanup. Either way, we appreciate your generosity!

What should I wear and bring?

Volunteers should wear work gloves, bring 2 or more large garbage bags with ties, and wear clothing appropriate for the weather. There might be muddy areas at the Path's perimeter, so wear old sneakers.

What areas should be cleaned?

The right-of-way of the Illinois Prairie Path and the Great Western Trail vary in width from about 20 feet up to 100 feet in some areas. The trail parking

....Continued on page 3



The Wheaton Environmental Improvement Commission's tent will be the hub of this year's Wheaton area cleanup activity.

IPP 40th Celebration a Success

Cool and cloudy weather was not enough to dissuade over 100 dedicated IPP members, visitors and guests from attending the after-

noon celebration at Volunteer Park September 27th, 2003 to celebrate the official 40th anniversary of a great idea - the Illinois Prairie Path.



The Retired Rhythm Rascals from Glen Ellyn provided wonderful music throughout the afternoon. An eight minute video, produced by College of DuPage students Stacey Simcik and Robert Schmidt was shown while

...Continued on page 2

The Illinois Prairie Path Newsletter

This newsletter is published by
The Illinois Prairie Path
Board of Directors

Editor: Dave Watts

Address correspondence to:
The Illinois Prairie Path,
P.O. Box 1086, Wheaton, IL
60189

Phone: 630-752-0120

Web Site: www.ipp.org

Meetings: The Illinois Prairie Path Board of Directors meetings are held at 7:30 P.M. on the first Tuesday of each month except August and November, at Rathje Park Building, 616 Delles Ave., Wheaton. Members are always welcome to attend.

The Illinois Prairie Path Board of Directors 2004

*Don Kirchenberg, President
Glendale Heights*

*Dick Wilson, Vice President
DesPlaines*

*F. Paul Mooring, Treasurer
Glen Ellyn*

*Nancy Becker, Secretary
Willowbrook*

*Dave Watts, Office Manager, Web
Master and Newsletter Editor
Glen Ellyn*

*Paul Aeschleman, Oak Park
Bob Bernero, Glen Ellyn
Mike Cross, Web Master, Naperville
Paul Didzerekis, Wheaton
Eric Keeley, Oakbrook Terrace
Jean Mooring, Glen Ellyn
Tom Pedrick, Carol Stream
Erik Spande, Winfield
Rob Sperl, Warrenville
Jan Stortz, Villa Park*

40th continued from page 1...

Michael Ellek, a local cable TV producer, shot another documentary. Special Prairie Path logo cakes, treats and apple cider were provided by the Prairie Path not-for-profit corporation and DuPage County.

Dignitaries from the County and towns along the Path were in attendance affirming the importance of the Path through their communities.

Following the abandonment of the CA & E railroad, what could have been an eyesore has instead been developed over the past four decades into the nation's first



successful rails-to-trails conversion, the popular multi-use pathway we have today.

The vision of May Theilgaard Watts back in 1963, described in a letter to the Chicago Tribune, followed by the hard work of many volunteers, is the reason we have the Path in its present form. Today, forty years later, and with 61 miles stretching into three counties, the work of keeping the Prairie Path a prominent and important trail is certainly not done. We are always in search of dedicated individuals to assist in our efforts.

Photos from top: Don Kirchenberg, IPPc President; Bill Mueller, Mayor of Lombard; Debra Olson, Pam Rion, John Noel, DuPage County Board Members; Jean Mooring, IPP Board Member, reads the 1963 May Watts letter that was published in the Chicago Tribune.

Please pass this extra membership card on to a friend...

The Illinois Prairie Path

P.O. Box 1086, Wheaton IL 60189

630-752-0120 www.ipp.org

Membership:

- ☐ I am renewing my membership
- ☐ I am applying for new membership

Name _____
(Please Print)

Address _____ City _____

Zip _____ Phone # _____ Email _____

- | | | |
|---|---|--|
| <input type="checkbox"/> Society \$1,000.00 | <input type="checkbox"/> Patron \$100.00 | <input type="checkbox"/> Organization \$30.00 |
| <input type="checkbox"/> Lifetime \$500.00 | <input type="checkbox"/> Sustaining \$50.00 | <input type="checkbox"/> Family/Individual \$20.00 |
| <input type="checkbox"/> Donor \$250.00 | <input type="checkbox"/> Supporting \$30.00 | |

All contributions are tax deductible



Cleanup continued from page 1...

lots should be cleaned, as well as the walkways and other paths that feed onto the path.

What to I do with filled trash bags?

In DuPage and Kane Counties, full trash bags can be left at the major road intersections along the IPP and the GWT. They will be picked up at the beginning of the next week.

Cook County trash bags should **not** be left at roadways - these should be disposed of by placing them in trash containers along the Path or could be taken home with you to be put out with your regular garbage.

Wheaton: The Wheaton Environmental Improvement Commission manages Wheaton's IPP cleanup. Their tent and signup table will be open from 9AM to Noon, and is located at Lincoln Avenue on the Elgin branch, about 2 blocks north of Volunteer Park (mile zero), in Wheaton.

Glen Ellyn: The Glen Ellyn Environmental Commission manages the cleanup for the Village. Their table is located south of the train station near the small gazebo at Prairie Path Park, between Park and Forest. Hours are from 9AM to Noon.

Villa Park: The Villa Park Pride Commission manages Villa Park's cleanup for both the IPP and the GWT. Their table is next to the Villa Park Historical Society's Museum on Villa Avenue, open from 9AM to Noon.

Annual Earth Day TRAIL CLEANUP

**of the Illinois Prairie Path
& the Great Western Trail**

**Saturday, April 24, 2004
Starting at 9:00AM - Rain or Shine!**

**Let's all pitch in to keep
the Path beautiful !
To volunteer, please call one of the
coordinators listed below**



Illinois Prairie Path	IPP Coordinator	Phone Number
Cook County	Paul Aeschleman	(708) 848-6023
Hillside	Nancy Becker	(630) 654-1019
Elmhurst	Eric Keeley	(630) 691-1413
Villa Park	Hosana Korynecky	(630) 530-0386
Lombard	Joelyn Kott	(630) 620-5718
Glen Ellyn	Dr. Jay Kinzler	(630) 758-8600
Naperville	Mike Cross	(630) 416-1415
Warrenville	Doug Henk	(630) 291-9124
Wayne	Gladys Johnston	(630) 584-2491
Elgin Branch at Rt. 59	Birt Hurlbert	(630) 293-1062
Wheaton	Helen Bartlett	(630) 668-1759
Winfield - Geneva Spur	Frank Shannon	(630) 802-7556
Batavia Spur	Ed Barsotti	(630) 820-8759
Elgin Branch @ Prince Crossing	Dave & Kandy Jedlicka	(630) 293-7214
<hr/>		
Great Western Trail	GWT Coordinator	Phone Number
Great Western Trail	Don Kirchenberg	(630) 682-9297

For additional locations or questions: Email: FrndsGrtWstnTrl@aol.com or call home office at 630-682-9297, Don Kirchenberg, President, IPPc

This Year Do Illinois

The Grand Illinois Trail And Parks (GITAP) ride is all set for Sunday, June 13 to Saturday, June 19, 2004. Enjoy a week of grand bicycling from DeKalb to the Mississippi River and back, using trails and roads on the GIT for about 450 miles, and camping at state parks.

Sponsored by the League of Illinois Bicyclists with help from the Illinois Dept. of Natural Resources.

For more information and a registration form, email Chuck Oestreich at oestreich@qconline.com or call 309-788-1845.

Wheaton's Clocktower Commons Nears Completion

By Rob Sperl,
IPP Board Member

It has been a productive year for a section of the Illinois Prairie Path in Wheaton. What was formerly known in concept as "Teen Park" has evolved into Clocktower Commons. The first step of this project was to bury one set of the overhead power lines that ran from Reber to Washington Streets along the IPP and move another set of lines. Shortly after ComEd completed this work, the asphalt from the former DuPage County courthouse parking lot adjacent to National-Louis University was removed.

Construction continued with the improvement and relocation of the IPP on the County's right-of-way. The Wheaton Park District has

constructed "The Rail" Skate Park and the 18-hole "Prairie Path Miniature Golf Course" at the site. In addition, the park will contain several amenities for trail users found within the Rotary Centennial Plaza such as a drinking fountain, bike racks, picnic areas, and a building that contains concessions and restrooms. You can look forward to enjoying the park this upcoming summer.

Engraved Brick Pavers Available

The two Rotary Clubs of Wheaton are conducting an engraved brick sales program to benefit Clocktower Commons. In honor of Rotary International's Centennial in 2005,



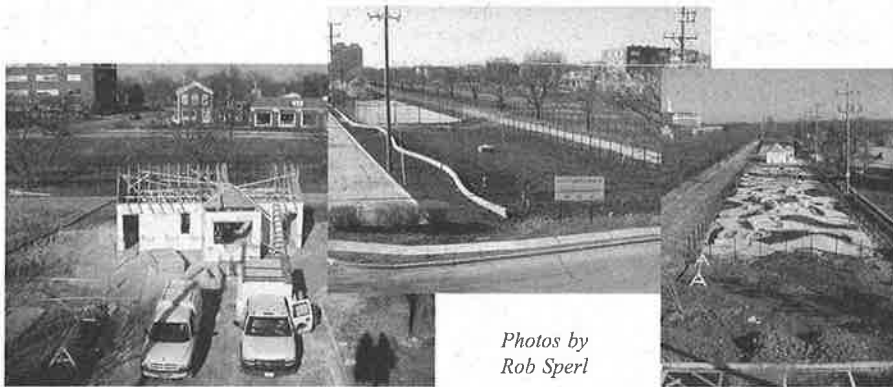
Photo by Deborah Fagan

the AM and Noon Rotary clubs have pledged the proceeds from this campaign plus in-kind donations. They are selling two sizes of bricks: 6" x 12" and 12" x 12", that will be placed throughout the plaza area. A special area east of the skate park will be designated for members and friends of the Illinois Prairie Path. Please note your preference to be included in this area when placing an order.

More information is available at: www.wheatonrotary.org/brickform.htm or by calling 630-871-2857.

**Clocktower
Grand Opening
is set for
Saturday,
June 12th,
11A.M. - 3P.M.**

For details, go to www.wheatonparkdistrict.com



Photos by
Rob Sperl

Aurora Branch Ferry Road Bridge Under Construction

As part of the roadway improvement project for Ferry Road, the DuPage County Division of Transportation is currently constructing a bridge over Ferry Road for the IPP Aurora Branch. The cost of the bridge component of this project is

approximately \$1,000,000 and is funded by DuPage County. The bridge is expected to be completed this June and the remainder of the roadway project, which includes a sidepath, is expected to be completed by fall, 2004.

Got a Question?



Just call us at
630-752-0120

(Voice Mail)

Winter / Spring 2004

Three Eagle Scout Projects

Members of St. Hubert's Hoffman Estates Troop 399 assist Michael Damico (shown at right) in his Eagle Scout project on Saturday, October 4th. Hundreds of buckets of fill were necessary to bury the ties and logs to curb the erosion along the Prairie Path in Glen Ellyn near the "Special 8" property.

Another autumn Eagle Scout project was completed by Glen Cadwallader of troop 374 (below). They installed two 30-foot sections of safety rail fencing over the East Branch of the DuPage River, west of Swift Road on the Great Western Trail.



A third Eagle Scout project was completed by Keith Klein. Safety rail fencing was constructed at the West Branch of the DuPage River along the Elgin Branch of the IPP (not shown).



Stephen Reid (left) and Chris Baker trim a railroad tie for use in erosion control.

DuPage Makes Plans for Replacing Main Stem Bridge Over East Branch of the DuPage River

By Deborah Fagan

DuPage County has begun engineering to replace the bridge along the IPP Main Stem over the East Branch of the DuPage River. The County proposes to construct a new 90-foot span steel beam bridge with a clear width of 12 ft. to replace an existing steel bridge which is in poor to fair condition.

The County completed a \$50,000 Phase I engineering study in 2000 and is continuing with this \$34,000 Phase II engineering study which will be completed in February, 2005.

DuPage is hoping to receive grant funding to support the

\$415,000 cost to replace this bridge which is too narrow for two-way trail traffic. A grant application is currently being considered by the Illinois Department of Natural Resources. If the County is successful in receiving grant funds, construction of the new bridge could take place in 2005-2006.

This project is part of an overall plan for major trail improvements over the next 8 years depending upon funding availability. For a full copy of the County's future plans for improvements along the Illinois Prairie Path and the Great Western Trail, see the county's website

at www.dupageco.org/bikeways under Illinois Prairie Path and Great Western Trail.



A Path user jogs over the East Branch bridge in late winter

IPPc Annual Meeting Recap

*By Jean Mooring,
IPP Board Member*

President Don Kirchenberg called to order the 2003 Annual Meeting of The Illinois Prairie Path not-for-profit corporation at 2:00 p.m. on November 2, the traditional first Sunday in November, at the Abbey on St. Charles Road in Elmhurst. As has been the custom in recent years, the Elmhurst Park District provided this very attractive and convenient facility for our annual meeting, for which we are most grateful. Some seventy-five members and friends attended the meeting.



Don Kirchenberg opens the Annual Meeting with announcements of current activities

President Kirchenberg opened the meeting by showing the acclaimed 8-minute marketing video produced by students in the Multimedia Arts Department of the College of DuPage. After introducing current and former IPP board members who were present, Don gave a brief summary of the year's major events including the 40th Anniversary Celebration and a detailed DuPage County trail maintenance policy developed by a task force representing all local trail interests. He also reported that the Forest Preserve

District of DuPage County has started condemnation proceedings to acquire and preserve the "Special 8" natural area next to the Illinois Prairie Path in rural Glen Ellyn.

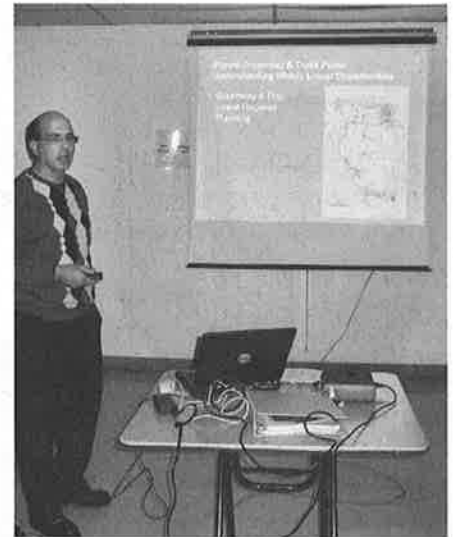
Treasurer Paul Mooring next presented the Treasurer's Report, which was approved by the membership. A copy of the report appears on page 8.

Mooring also chaired the nominating committee, which recommended the reelection of five board members whose terms were expiring: Mike Cross, Don Kirchenberg, Jean Mooring, Erik Spande and Dick Wilson. Don announced that he had accepted with great regret the resignation of board member Nancy Wasielewski who had been an outstanding office manager and Newsletter editor, so there was an additional opening on the board. The committee nominated Jan Stortz of Villa Park, a volunteer naturalist trained at the Morton Arboretum, to fill that vacancy. There being no nominations from the floor, all nominees were approved by acclamation.

Jeanne Bereza, a member and ski trip coordinator from the Fox Valley Bicycle and Ski Club, one of the major supporters of The Illinois Prairie Path, spoke briefly about the state of trails in Kane County. Her report was very timely since Kane County is expanding its excellent trail system.

George Bellovics, Illinois Department of Natural Resources planner who lives in Dixon and coordinates the development and marketing of the 475-mile Grand Illinois Trail was the principal invited speaker. Bellovics displayed "User Guides 2002" for the Grand Illinois Trail and presented a video showing a recent bike tour of the route. The tour looked like fun but appeared

strenuous and not for the occasional biker.



George Bellovics was the special guest speaker this year

Last on the program were Paul and Jean Mooring with their annual slide show. Notable pictures showed a cute girl jogger on the Path in Wayne, prairie burns, trail cleanups, the 40th Anniversary Celebration attended by an enthusiastic crowd including some important people from the Path's past and several DuPage County Board members, the installation of the Mooring bench east of Hill Avenue and of a relocated bench at Volunteer Park, the filming of the COD video, the excellent repair job done by the DuPage County Division of Transportation on the deteriorating wood decking on Volunteer Bridge, and the replacement of IPP logo signs and a couple of vandalized display cases. The show ended with a few pretty pictures of trail users, flowers and scenery.

The meeting concluded with the usual cakes, cookies and cider provided by board members and their spouses. Everyone agreed that it had been a very well organized meeting.

Lombard Lights the Path

Sometime in late spring, the Village of Lombard will flip the switch on 2.1 miles of newly installed lighting along their section of the Path's Main Stem. The alternating installation flanks both sides of the Path, with fixtures similar to the classic street lamp design also used along the Villa Park section.

John Burg, acting Public Works Director, explains that the new lighting will increase user safety, plus add a special charm for Path users during twilight hours. The

Village began the project this past October, contracting the work out, with special instructions to minimize construction impact on trees and other plants as much as possible. The Village paid for most of the \$518,000 project, with \$200,000 coming from a grant from the Illinois Department of Natural Resources.

The new lights span east from Rt. 53 to the Village's eastern border near Addison Ave.



This and other lamps will light the Lombard section beginning this summer



Photo by Erik Spande

A mountain of garbage was collected from just a quarter-mile area along the Path in last year's cleanup. This is why we need your help this April 24th.



Ride the Lost Bridge Trail

The Illinois Trails Conservancy Legislative Invitational Bike Ride on the Lost Bridge Trail will be held in Springfield on April 20, 2004. The ride will begin behind the IDOT/Hanley Building on Dirksen at 5:30PM. Cake and refreshments will be served as a 5th Birthday Celebration for Illinois Trails Conservancy becoming a "Stand Alone Agency" from Rails to Trails Conservancy. For more information, contact Bev Moore at (815) 569-2472.

What's All the Construction Along the Elgin Branch In DuPage?

You may notice the path in the West Chicago and Wayne area has seen a lot of construction over the winter. DuPage County Public Works is undertaking a drainage maintenance project to replace deteriorating culverts under the trail system. The work was necessary because of the age of the culverts and the danger of the path collapsing.

The \$650,000 project is approximately 90% completed with remaining construction, restoration, and replacement plantings to occur this spring.

Trails Maintenance Policy Available

A copy of the DuPage County Trail Maintenance Policy adopted last fall with the help of The Illinois Prairie Path and other trail users groups can be found at www.dupageco.org/bikeways.

New ATV Helps Patrol Path

DuPage County residents may see an unexpected sight on one of the county's recreational trails; a sheriff's deputy responding to a call for assistance on a four-wheeled all-terrain vehicle.



LtoR: Corporal Bill Shreffler, DuPage Co. Sheriff's Police; Pam Rion, County Board Member District 6 and Chairman of the County Transportation Committee; John Noel and Debra Olson, County Board Members District 4; and Corporal Jack Dellinger, DuPage County Sheriff's Police

The Sheriff's Office has placed a 2000 Honda All-Terrain Vehicle into service along the Path. The ATV is used on an incident basis to fight crime and drugs and to respond to calls in hard-to-access and remote areas such as the Prairie Path, the Great Western Trail, and other previously inaccessible terrain.

The all-terrain vehicle not only helps deputies' response time in certain areas but also enables them to carry specialized medical and tactical equipment that might be needed.

Trail users will see newly installed "Alert Boxes" located at high-traffic locations along the paths. Fliers in those boxes will provide important information to users of the trail.

The Illinois Prairie Path Treasurer's Report Fiscal Year 2003

Cash Balance, November 1, 2002

Bank One	\$23,648.22
Liberty Funds Services, Inc.	\$104,892.94
Total	\$128,541.16

Revenue

Donations, Grants, Bequests	\$6,787.50
Dues	\$38,992.00
Sales (Maps, Shirts, Patches, Guides, etc.)	\$2,228.00
Interest	\$490.81
Miscellaneous	\$30.00
Total	\$48,528.31

Expenditures

Office Manager (Contractual Stipend)	\$9,560.00
Newsletters (Production and Mailing)	\$6,775.19
Membership / Flyers	\$0.00
Maintenance Supplies	\$0.00
Litter Removal and Port-o-let	\$6,218.64
Postage	\$1,704.55
Office Supplies	\$0.00
Telephone	\$458.95
Special Projects	\$1,458.82
Special Events	\$974.83
Prairie Restoration	\$1,960.00
Other Printing	\$2,139.97
Merchandise For Sale	\$10,907.82
Donations	\$0.00
Travel / Board Expenses	\$436.14
Legal and Consulting	\$0.00
Petty Cash Fund	\$2,000.00
Dues and Subscriptions	\$0.00
Government Fees	\$20.00
Miscellaneous	\$0.00
Total	\$44,614.91

Cash Balance, October 31, 2003

Bank One	\$27,191.18
Liberty Funds Services, Inc.	\$105,263.38
Total	\$132,454.56

Submitted by Paul Mooring, Treasurer

Illinois Prairie Path Store

Show Your Support For The Illinois Prairie Path! Long Sleeve IPPc Shirts Now Available

Ride or walk the IPP in style! Our new shirt design features The IPPc logo embroidered (green thread) above the left breast pocket of this 7.26 oz. 100% cotton long sleeve denim shirt in both natural (light khaki) and light blue denim colors. Shirt also features wood-tone buttons and double-needle stitching. Price: \$40.00 per shirt, plus add \$5 shipping and handling. For multiple shirt orders, call 630-752-0120 for shipping price. For current shirt inventory, go to www.ipp.org/GUI/ipp-store.htm



Illinois Prairie Path Color Map 7th Edition



Only \$6 - Includes postage and shipping.

(Note: the map is sent free when you join The IPPc!)

- Full color illustrations and photos
- Large 18" x 24" size (folds to 3 1/2" x 9") on tear-proof, water-proof paper
- New! Includes updated information on renovated Cook County portion of the Illinois Prairie Path
- Includes full suburb/street detail of the 61-mile trail from Cook County west to Kane County
- Discover 26 points of interest along the IPP and 14 recommended bike routes
- Details train stations, prairies, parking lots, restrooms and drinking fountains
- Learn more about The IPPc's management, its history and its founder May Watts. Published by The Illinois Prairie Path not-for-profit corporation



IPP Guidebook - by Helen Turner

This 32-page guidebook contains information about the history, geology, trees, flowers, birds and animals of the Illinois Prairie Path. Cost: \$5 per copy includes shipping.

Sew it or iron it on, The IPPc Patch Shows You Care

The IPPc patch can be yours for \$1.50 each. Includes shipping.



Name _____ Phone _____ Email _____

Address _____ City _____ Zip _____

Item(s) Requested _____ Amount Enclosed \$ _____

Send this entire order form and check to: The Illinois Prairie Path, P.O. Box 1086, Wheaton, IL 60189



The Illinois Prairie Path Newsletter
P.O. Box 1086
Wheaton, IL 60189

Nonprofit Organization
U.S. POSTAGE
PAID
Carol Stream, IL 60188
Permit No. 621

|||||.....|||||.....|||||.....|||||.....|||||.....|||||.....
*****AUTO**SCH 5-DIGIT 60527

████████████████████
████████████████████
████████████████████

·DATED MATERIAL

ADDRESS SERVICE REQUESTED



More scenes
from our
40th
Anniversary
Celebration

2003
4th
ANNIVERSARY

